

TURNFLO



Cast Iron

Valves

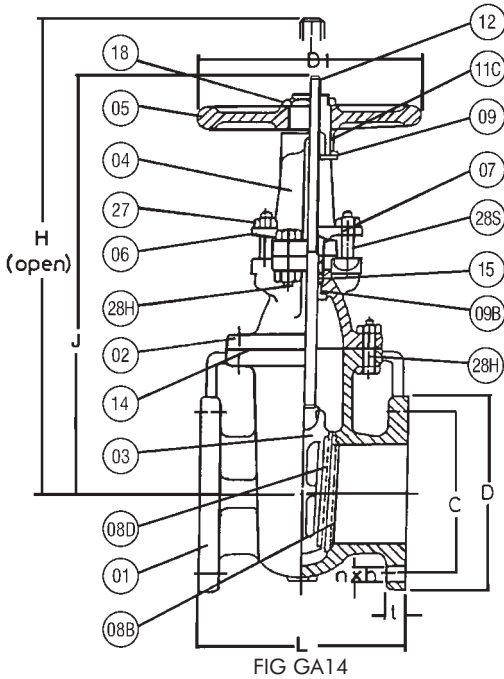
and

Strainers

- Proven reliability
- Robust design
- Economical

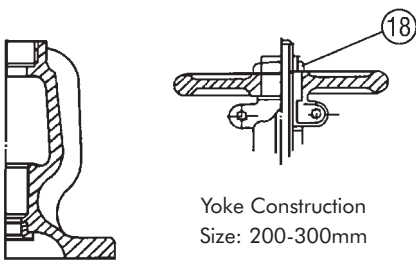
FIG GA14 GATE VALVE

- Heavy duty design
- Dezincification resistant trim
- Outside screw and yoke, bolted bonnet
- Rising stem, solid wedge
- Conforms to Australian Standard 3579, Class 14
- Working pressure: 1400 kPa, Temperature range: 10°C to 65°C
- Flanged end and drilling to AS2129 Table 'E'



Materials

No	Component	Material	Standard number	Grade or designation
01	Body	Grey cast iron	AS1830	T220
02	Bonnet	Grey cast iron	AS1830	T220
03	Disc	Grey cast iron	AS1830	T220
04	Yoke	Grey cast iron	AS1830	T220
05	Hand Wheel	Grey cast iron	AS1830	T220
06	Gland Flange	Ductile iron	AS1831	-
07	Gland	Gunmetal	AS1565	C83600
08B	Body Seat Ring	Gunmetal	AS1565	C83600
08D	Disc Seat Ring	Gunmetal	AS1565	C83600
09	Yoke Sleeve	Gunmetal	AS1565	C83600
09B	Bonnet Bush	Brass	AS1567	486
11C	Sleeve Nut	Grey cast iron	AS1830	T220
12	Stem	Brass	AS1567	486
14	Gasket	Non-Asbestos Sheet		
15	Packing	Non-Asbestos Braided Fibre		
18	Wheel Nut	Grey cast iron	AS1830	T220
27	Nut	Carbon steel	AS1111	-
28H	Bolt	Carbon steel	AS1111	-
28S	Bolt	Carbon steel	AS1111	-



Yoke Construction
Size: 50-80mm

Yoke Construction
Size: 200-300mm

Dimensions

Unit-mm

Nominal Size	Dimensions								Wt. (Kg)
	H	J	L	C	D	D1	t	n x h	
50	374	317	178	114	150	178	19	4 x 18	16
65	423	353	190	127	165	178	19	4 x 18	22
80	479	396	203	146	185	203	19	4 x 18	27
100	595	486	229	178	215	254	22	8 x 18	47
125	704	569	254	210	255	305	22	8 x 18	65
150	819	655	267	235	280	305	22	8 x 22	84
200	1002	787	292	292	335	356	25	8 x 22	135
250	1223	956	330	356	405	406	25	12 x 22	200
300	1424	1104	356	406	455	457	29	12 x 26	284



Factory Mutual Research
Approval for Fire Service (IP9A1.AH)



Underwriters Laboratories
Listing for Fire Service (Ex 4235)

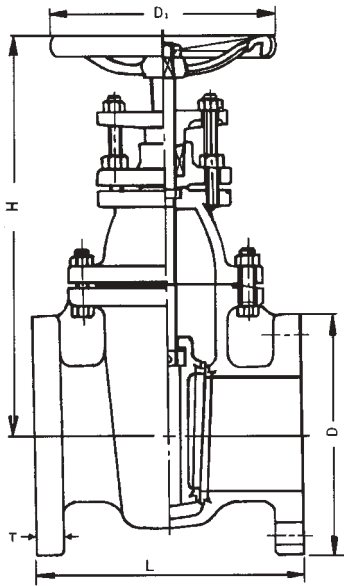


Scientific Services
Laboratory (SSL)
Listed for Fire Services



Standards Australia Approval
to AS3579 (Lic 1210)

FIG 701A GATE VALVE



- Inside screw, non-rising stem
- Bronze trim, brass stem
- Flanged AS2129 Table 'E'
- Max. working pressure 1400 kPa (cold non-shock)

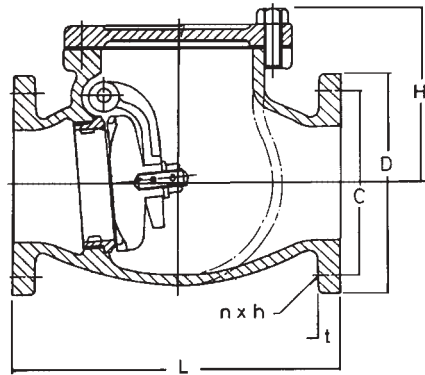
Description	Material	Specification
Body	Cast Iron	ASTM A126-B
Bonnet	Cast Iron	ASTM A126-B
Disc	Cast Iron	ASTM A126-B
Stem	Brass	ASTM B16
Seat Rings	Cast Bronze	ASTM B62
Disc Rings	Cast Bronze	ASTM B62
Packing	Non-Asbestos	

Dimensions (mm)

Size mm	L Face to Face	H Centre to Top	D Flange Dia.	T Thickness	Di H. Wheel Dia.	Mass kg
50	178	253	152	19	160	13
65	190	270	165	19	160	16
80	203	308	184	19	180	19
100	229	367	216	22	200	32
125	254	434	254	22	250	45
150	267	486	279	22	280	61
200	292	588	337	25	300	96
250	330	697	406	25	355	136
300	356	792	457	29	400	198

Size range 50-300 mm

FIG 703 CHECK VALVE



- Bolted cover
- Bronze trim
- Flanged AS2129 Table 'E'
- Max. working pressure 1400 kPa (cold non-shock)

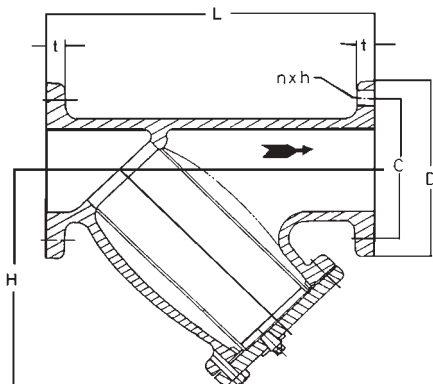
Description	Material	Specification
Body	Cast Iron	ASTM A126-B
Cover	Cast Iron	ASTM A126-B
Disc	Cast Iron	ASTM A126-B
Seat Ring	Cast Bronze	ASTM B62
Disc Pin	Brass	ASTM B16
Disc Ring	Cast Bronze	ASTM B62

Dimensions (mm)

Size mm	H	L	C	D	t	n x h	Mass kg
50	111	200	114	152	19	4 x 17	9.3
65	127	220	127	165	19	4 x 17	13.0
80	140	240	146	184	19	4 x 17	16.9
100	159	290	178	216	22	8 x 17	27.0
125	191	330	210	254	22	8 x 17	43.0
150	203	360	235	279	22	8 x 22	56.0
200	246	500	292	337	25	8 x 22	101.0
250	283	620	356	406	25	12 x 22	163.0
300	330	700	406	457	29	12 x 25	245.0

Size range 50-300 mm

FIG 754A Y-STRAINER



- Body & Cover Cast Iron to ASTM A126B
- Screen 304 SS
- Plug Malleable Iron to ASTM A197
- Gasket Non-asbestos compressed Fibre
- Flanges drilled AS2129 Table 'E'
- Pressure & Temperature rating:

Steam 861 kPa @ 232°C
Water, oil, gas 1400 kPa @ 66°C

Dimensions (mm)

Size mm	H	L	C	D	t	n x h	a x p	App. Wt. (Kg)
50	157	251	114	152	19	4 x 17	1.2 x 2.0	10
65	194	286	127	165	19	4 x 17	1.2 x 2.0	16
80	210	318	146	184	19	4 x 17	1.2 x 2.0	20
100	256	378	178	216	22	8 x 17	3.2 x 4.5	36
125	318	456	210	254	22	8 x 17	3.2 x 4.5	50
150	364	518	235	279	22	8 x 22	3.2 x 4.5	67
200	442	610	292	337	25	8 x 22	3.2 x 4.5	106
250	530	749	356	406	25	12 x 22	3.2 x 4.5	188
300	598	857	406	457	29	12 x 25	3.2 x 4.5	313

Size range 50-300 mm

Screen a: hole dia. p: pitch

FIG 723A CHECK VALVE

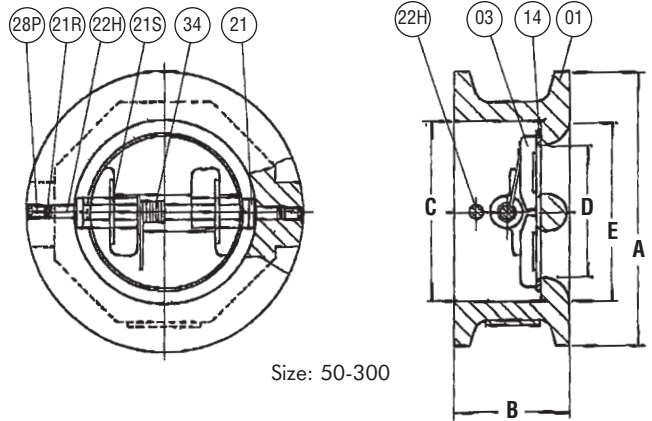
- Maximum CWP: - 2000 kPa
- End Connections: - Table E

- Hydrostatic Test Pressure:
 Seat – 2000 kPa
 Shell – 3000 kPa

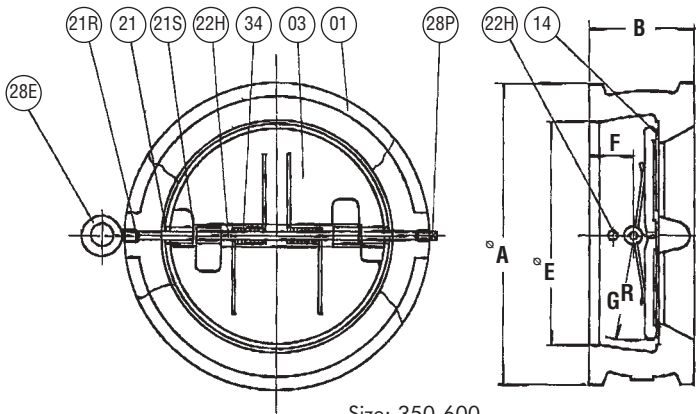
Dimensions

Unit-mm

Nominal Size	Dimensions					Net.Wt. kg
	A	B	C	D	E	
50	96	54	65	48	74.2	1.9
65	109	54	78	57	84	2.6
80	128	57.2	92	70	94	3.0
100	160	63.5	118	92	128.5	5.3
125	192	70	143	108	142.1	7.8
150	213	76.2	168.3	131.8	165.1	11.0
200	270	95.3	219	174.6	212.7	18.5
250	334	108	273	225.4	266.7	31.0
300	380	143	324	269.9	317.5	54.2



Size: 50-300



Size: 350-600

Dimensions (mm)

Unit-mm

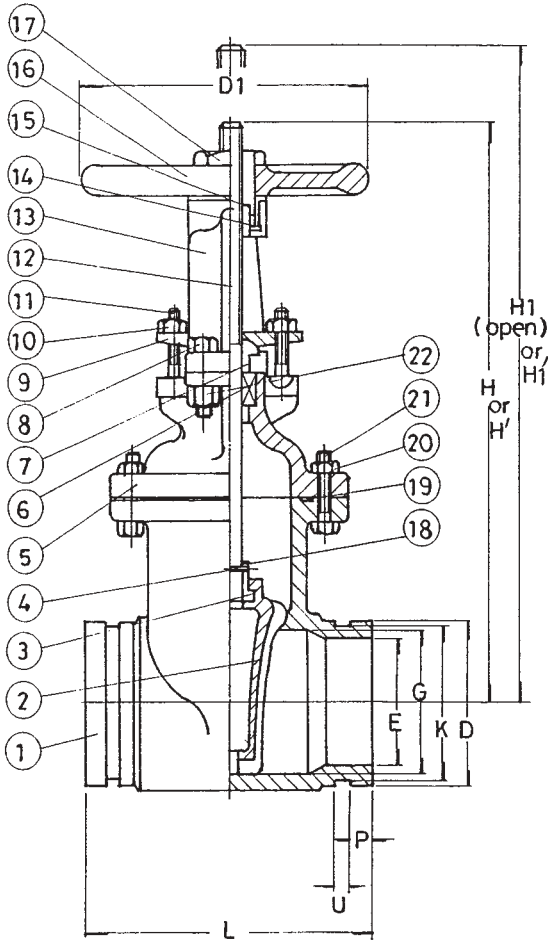
Nominal Size	Dimensions					Net.Wt. kg
	°A	B	°E	F	GR	
350	444	184	356	94	170	71
400	495	191	406	89	195	99
450	558	203	457	86	219	118
500	615	213	508	89	244	180
600	723	222	610	90	292	258

Material List

No	Part	Material	Spec.
01	Body	Cast Iron	ASTM A126-B
* 03	Plate	Stainless Steel	ASTM A351-CF8
* 14	Body Seal	Buna "N"	N.B.R
21	Washer	P.T.F.E.	
21S	Washer	P.T.F.E.	
21R	Packing	Buna "N"	N.B.R
22H	Hinge Pin	Stainless Steel	ASTM A276-304
28P	Plug	Mild Steel	ASTM A105-80
34	Spring	Stainless Steel	ASTM A276-316
28E	Eye Bolt	Steel	

* Other material is available to order.

FIG 722G GATE VALVE



- S & Y, Rising stem
- Resilient wedge
- UL Listed, FM Approved
- Grooved ends
- Cold working pressure : 1400 kPa
- 'Signal red' colour finish

Material List

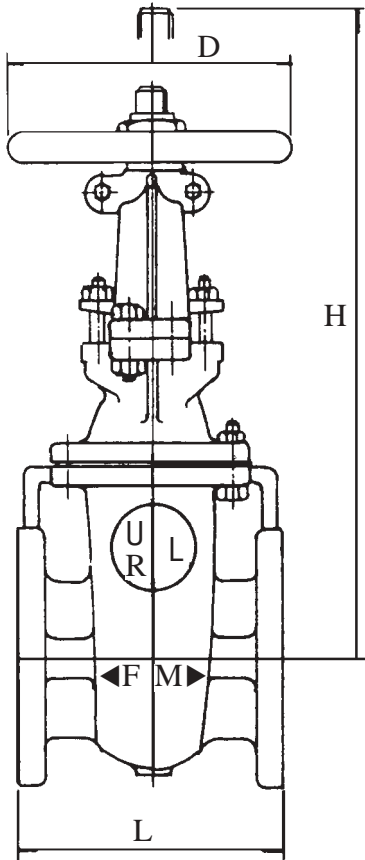
No	Part	Material	ASTM Spec.
1	Body	Ductile Iron	A536 Grade 65-42-12
2	Disc Rubber	Cast Iron Coated with EPDM	
3	Disc Nut	Cast Bronze	B62
4	Taper Pin	Stainless Steel	SUS 304
5	Bonnet	Cast Iron	A126-B
6	Packing	Non-Asbestos Packing	
7	Gland	Cast Bronze	B62
8	Hexagon Head Bolt	Steel	A307-B
9	Gland Flange	Ductile Iron	A536 Grade 65-42-12
10	Hexagon Nut	Brass	B16
11	Square Head Bolt	Steel	A307-B
12	Stem	Brass	B16
13	Yoke	Cast Iron	A126-B
14	Sleeve Nut	Ductile Iron	A536 Grade 65-42-12
15	Yoke Sleeve	Cast Bronze	B62
16	Hand Wheel	Cast Iron	A126-B
17	Wheel Nut	Ductile Iron	A536 Grade 65-42-12
18	O Ring	EPDM	
19	Rubber Gasket	EPDM	
20	Hexagon Nut	Steel	A307-B
21	Hexagon Head Bolt	Steel	A307-B
22	Hexagon Nut	Steel	A307-B



Dimensions (mm)

Nominal Size	Dimensions - mm											
	H	H1	L	D	D1	G	E	K	P	U	H'	H1'
80	451.64	530.23	203.20	88.90	254.00	76.20	66.67	84.93	16.00	7.87	481.81	560.39
100	463.55	565.55	228.60	114.30	254.00	101.60	94.05	109.93	16.00	9.65	493.71	595.31
150	622.30	774.70	266.70	168.27	304.80	152.40	142.87	164.31	16.00	9.65	661.99	814.39

FIG 762U GATE VALVE



- Cast Iron, Bronze trim
- Outside screw, rising stem
- UL Listed
- FM Approved
- 175 psi working pressure
- 350 psi test pressure
- Size range 80 - 300mm

Materials of Construction

Description	Material	Specification
Body	Cast Iron	ASTM A126-B
Bonnet	Cast Iron	ASTM A126-B
Disc	Cast Iron	ASTM A126-B
Stem	Brass	ASTM B16
Seat Ring	Cast Bronze	ASTM B62
Packing	Non-Asbestos Packing	

Dimensions

Size mm	L Face to Face	H Centre to Top	D Flange Dia.	Wt. (KG)
80	203	480	200	27
100	229	594	250	47
150	267	818	300	84
200	292	1003	350	135
250	330	1224	400	200
300	356	1425	450	285



DISCLAIMER

OneSteel provides the information contained in this brochure as a guide only for your information. OneSteel has taken reasonable care to ensure the accuracy of the material but you should not rely on the whole or part of the information. OneSteel expressly disclaims all liability whatsoever for (including any direct or indirect loss or damage, costs or expenses howsoever incurred by any person) or reliance on the whole or part of the information contained in or omitted from this brochure. OneSteel recommends that you verify any information regarding products with your independent expert adviser and rely solely on that adviser's recommendations.



Available From:



OneSteel Piping Systems

Adelaide	70 Grand Junction Road, Kilburn SA	08 8304 7510
Brisbane	285 Lavarack Avenue, Eagle Farm QLD	07 3860 3300
Darwin	Lot 889 Stuart Highway, Berrimah NT	08 8935 0350
Gladstone	Bensted Street, Gladstone QLD	07 4972 8033
Mackay	Cnr. Harbour Road & Spiller Avenue, North Mackay QLD	07 4955 1555
Melbourne	31-41 National Drive, Lyndhurst VIC	03 8795 2300
Newcastle	Creek Road, Wallsend NSW	02 4955 0622
Perth	1 Howson Way, Spearwood WA	08 9494 0900
Sydney	412-426 Victoria Street, Wetherill Park NSW	02 9756 1899
Townsville	387-399 Bayswater Road, Garbutt QLD	07 4775 5100
Wollongong	Five Islands Road, Wollongong NSW	02 4271 1788

www.OneSteel.com



OneSteel Building Services

National (Toll Free)		1300 553 473
Adelaide	70 Grand Junction Road, Kilburn SA	08 8304 7570
Brisbane	Unit 5, 429 Creek Road, Mt Gravatt QLD	07 3420 4099
Melbourne	90 Turner Street, Port Melbourne VIC	03 8645 3222
Perth	1 Howson Way, Spearwood WA	08 9494 0989
Sydney	49 Elizabeth Street, Wetherill Park NSW	02 8788 5810

www.OneSteelBuildingServices.com

This information is provided for your assistance. However we are obliged to draw your attention to the following: OneSteel provides the information contained in this brochure as a guide only for your information. OneSteel has taken reasonable care to ensure the accuracy of the material but you should not rely on the whole or any part of the information. Technology is changing rapidly and product specifications and or manufacturing techniques may have changed since the first publication date of this document. OneSteel expressly disclaims all liability whatsoever for (including any direct or indirect loss or damage, costs or expenses howsoever incurred by any person) or reliance on the whole or any part of the information contained in or omitted from this brochure. OneSteel recommends that you verify any information regarding products with your independent expert adviser and rely solely on that adviser's recommendations.



All trademarks are property of their respective owners

"Victaulic" and "Victaulite" trademarks are owned by VICTAULIC COMPANY, Pennsylvania, United States of America

"OneSteel Building Service" is a Trademark of OneSteel Limited (ABN 63 004 410 833)